

**M/TUG**  
**ADNAN BEY**



# GENERAL INFORMATION

## M/TUG ADNAN BEY

### REGISTRATION

Year built / builder	1976 - GERMANY
Class	N/A
Flag	TURKEY
No of ship	2006323
Call sign	TCA3157
IMO	8690605

### DIMENSIONS

Length overall	20,53 m
Breadth moulded	7 m
Depth moulded	2,08 m
Gross tonnage	102
Net tonnage	31

### MACHINERY

Maker	2XCATERPILAR
Type	V12
Total BHP / kW	450X450 -900 BHP
Bow thruster	N/A
Diesel generators	MERCEDES- BENZ 68 BHP
Emergency generator	ATLAS JENERATÖR 14 KW

### CAPACITIES %100

Diesel oil	47,49 m <sup>3</sup>
Fresh water	12,47 m <sup>3</sup>
Foam tank	N/A
Permanent FW	0,96 m <sup>3</sup>
Sewage tank	0,9 m <sup>3</sup>

### PERFORMANCE

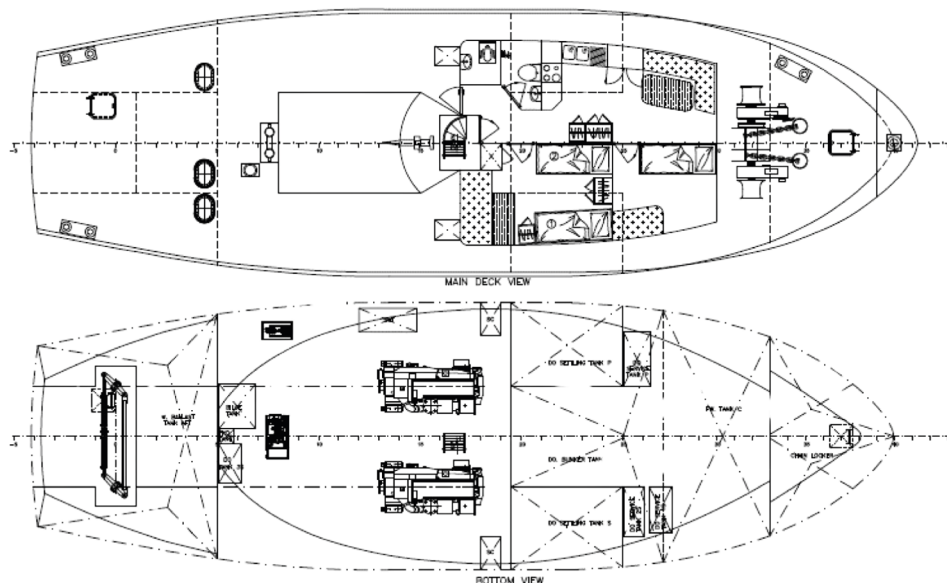
Bollard pull max and continuous	7 tons
Max speed	9 knots
Service speed	7,5 knots
Economical speed	6 knots

### TOWING / ANCHOR HANDLING

Spare tow wire	180 m
Tow rope	110 m
Anchor weight	120 kg
Anchor chain	5 PORT / 5 STB
Anchor chain thickness	19 mm
Winch	1 pieces

### NAVIGATION AND COMMUNICATION

Radar	JRC JMA 2253 MARINE RADAR 10KW LE20716 8.5-10.5 GHZ
SART	MC MURDO SMARTFIND S5A AIS SART
Navtex	SAMYUNG SNX-300 NAVTEX
GDMSS / VHF	SAILOR RT 2048 VHF
GDMSS / VHF	MIDLAND NEPTUNE
GPS	SAMYUNG SPR-1400 GPS
AIS	"I-AIS KLAS B CS 12W MO1 E00888 156-163 MHZ TRANSPONDER"



# GENERAL INFORMATIONS

M/TUG ADNAN BEY

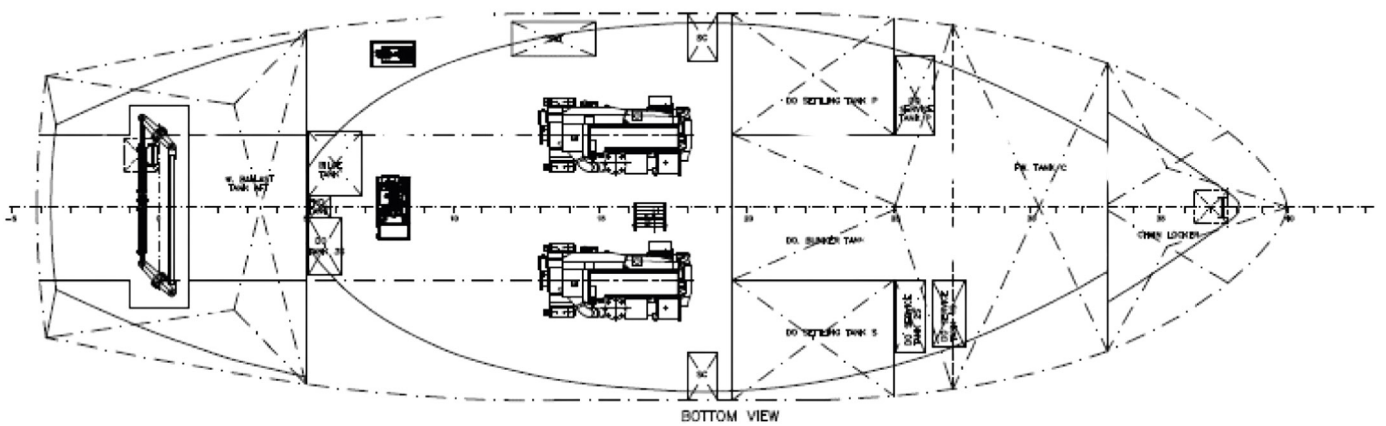
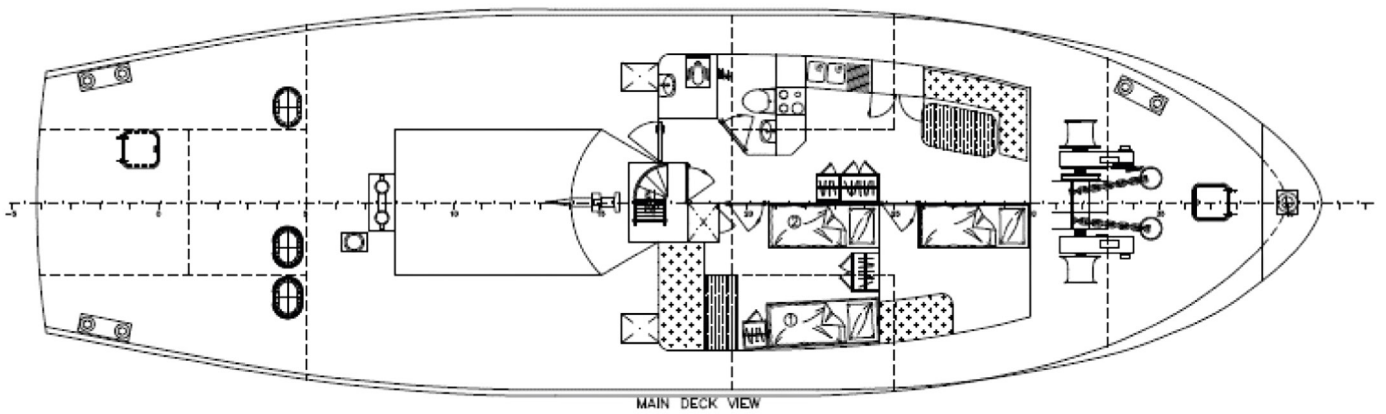
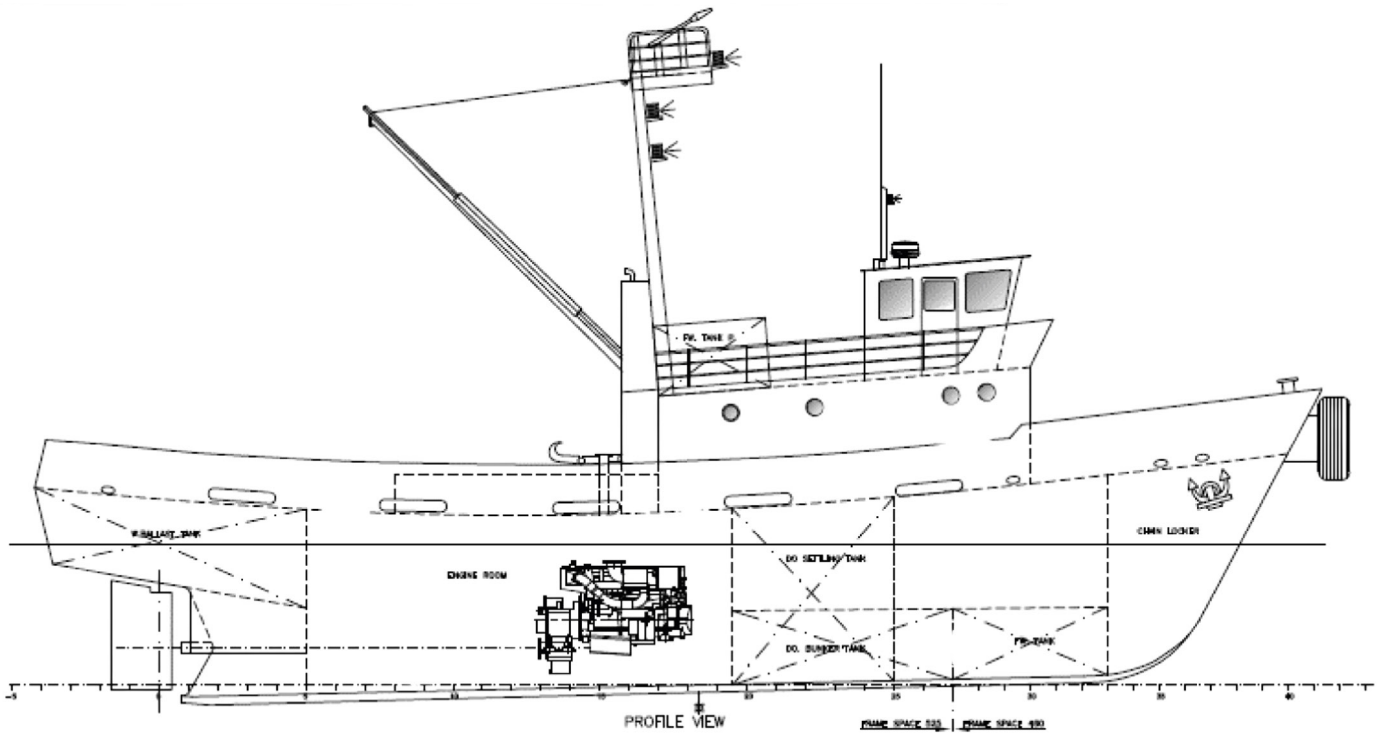
## RESCUE EQUIPMENT


Life raft	1 pieces 6 person
Breathing tube	3 pieces 6 LT
Breathing set backrest	5 pieces
Fixed system 45 kg CO <sub>2</sub>	1 pieces
Fixed system 10 kg CO <sub>2</sub>	1 pieces
Fixed plot 0.150 kg CO <sub>2</sub>	N/A
Chemical suit	N/A
Emergency escape breathing device	5 pieces
Passenger ladder	1 piece
Fire blanket	1 piece
Fire hose	2 pieces 20m -1 piece 15m
Fire hose nozzle	3 pieces
Fireman suit	1 piece
Fireproof handheld radio for firefighters	1 piece
Gas meter	1 piece
Immersion suit	1 piece
Life buoy 2.5 kg	2 pieces
Life buoy 4 kg	2 pieces
Man overboard buoy	2 pieces
Life jacket	8 pieces oversze
Life jacket children	2 pieces chld
Medical oxygen 2 lt	1 piece
Pilot ladder 4 mt	1 piece
DP fire extinguisher 2 kg	1 piece
DP fire extinguisher 12 kg	1 piece
CO <sub>2</sub> fire extinguisher 5 kg	1 piece
FOAM fire extinguisher 50 kg	1 piece
Fire pump (Volvo Penta)	N/A
Fire pump	1 piece

## ACOMMODATION

Cabins / beds	4 pieces
Crew / passengers	6 person
Mess / dayroom	1 piece

# M/TUG ADNAN BEY





As PGE Tugs, we commenced our maritime activities in 2020 alongside our tugboat services, and since then, we have rapidly progressed both internationally and domestically. We closely monitor the developments in the maritime sector in our country in recent years and strive to stay updated by taking necessary steps within our company, PGE Tugs.

We adopt a policy of providing the best service, with a focus on standout tugboat and towing services among the offerings provided to our clients. This principle guides our operations.

Since the inception of our journey, PGE Tugs has consistently demonstrated determination and professionalism, enabling us to accomplish significant projects and reach a competitive level in the maritime sector. We take pride in being among the esteemed companies worldwide and domestically, particularly with our offered tugboat services.

**TUGBOAT SERVICES**  
**PGE**  
**TUGS**