

M/TUG

SERHAT BEY 1



GENERAL INFORMATIONS

M/TUG SERHAT BEY 1

REGISTRATION

Year built / builder	2013/TATLISU
Class	INSB
Flag	TURKEY
No of ship	1926243
Call sign	TCWA8
IMO	

DIMENSIONS

Length overall	20,5 M
Breadth moulded	6,20 M
Depth moulded	3,60 M
Gross tonnage	98
Net tonnage	29

MACHINERY

Maker	WEICHAI
Type	X6170702C818
Total BHP / kW	601 KW X 2
Bow thruster	N/A
Diesel generators	1X72 KW /1X35KW -BAUDOUIIN
Emergency generator	N/A

CAPASITIES %100

Diesel oil	32,901m3
Fresh water	6,095 m3
Bilge tank	2,522 m3
Sewage tank	2,542 m3

PERFORMANCE

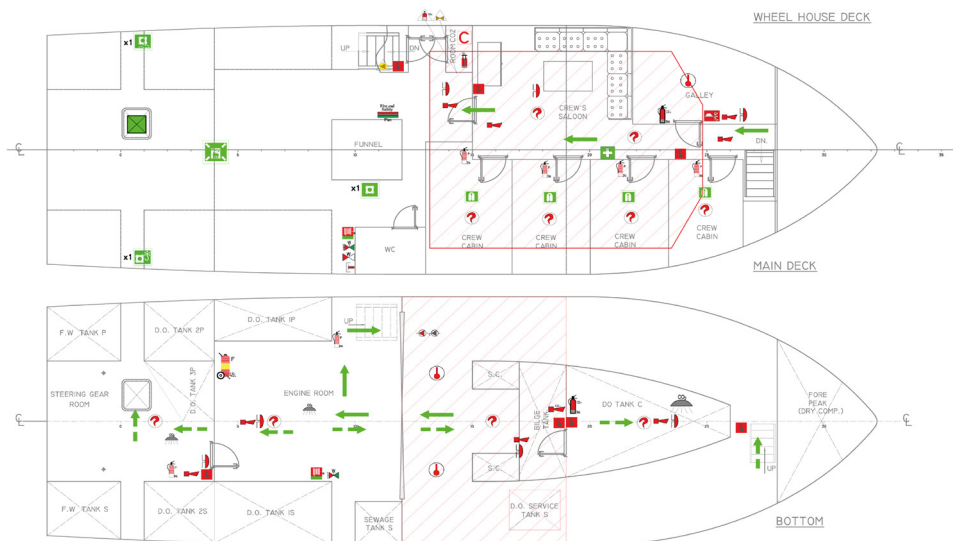
Bollard pull max and continuous	25 tons
Max speed	12 knots
Service speed	9 knots
Economical speed	9 knots

TOWING / ANCHOR HANDLING

Anchor weight	180 KG X 2
Anchor chain	7 PORT/ 8 STB
Anchor chain thickness	24 MM
Winch	NED-DECK SWL 3.6 T

NAVIGATION AND COMMUNICATION

Radar No:1	JRC/ JMA-5212-6BB
Radar No:2	JRC/ JMA-3334
VHF No:1	JRC/ JHS-800S VHF GMDSS CLASS A
VHF No:1	JRC/ JHS-800S VHF GMDSS CLASS A
GPS	RC/ JLR-8400
AUTOPILOT	SIMRAD-AP2004
GPS COMPASS	JRC/ JLR-21
NAVTEX	RC/ NCR-333
ECHOSOUNDER	ALPHA LINE
AIS	EMTRAK-A200 AIS CLASS A
GMDSS VHF No:1	ENTEL HT649
GMDSS VHF No:2	ENTEL HT649
AIS START	JOTRON AIS-SART w/BRACKET
EPIRB	JOTRON TRON 60 GPS



GENERAL INFORMATIONS

M/TUG SERHAT BEY 1

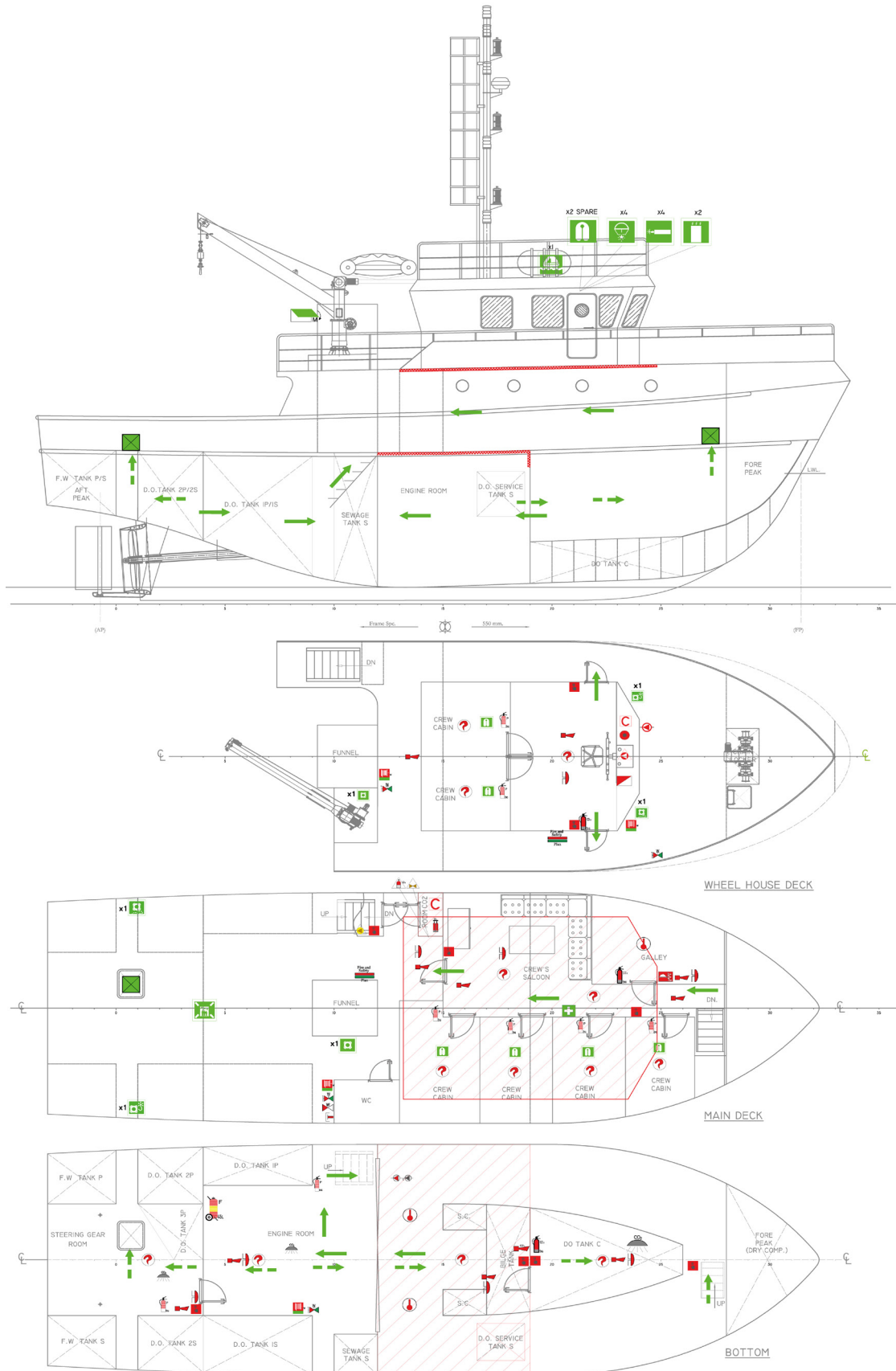
RESCUE EQUIPMENT


Life raft	1 pieces-10 personal
Breathing tube	3 pieces
Breathing set backrest	7 pieces
Fixed system 45 kg CO ₂	3 pieces
Fixed system 10 kg CO ₂	2 pieces
Chemical suit	2 pieces
Emergency escape breathing device	1 pieces
Passenger ladder	1 pieces
Fire blanket	1 pieces
Fire hose	4 pieces
Fire hose nozzle	4 pieces
Fireman suit	1 pieces
Fireproof handheld radio for firefighters	1 set
Gas meter	1 pieces
Immersion suit	2 pieces
Life buoy 2.5 kg	6 pieces
Man overboard buoy	1 pieces
Life jacket	8 pieces
Medical oxygen 2 lt	6 pieces
Pilot ladder 4 mt	1 pieces
DP fire extinguisher 2 kg	7 pieces
DP fire extinguisher 12 kg	1 pieces
CO ₂ fire extinguisher 5 kg	3 pieces
FOAM fire extinguisher 50 kg	1 pieces
Fire pump (Volvo Penta)	N/A
Fire pump	1 pieces

ACOMMODATION

Cabins / beds	6 bed
Crew / passengers	6 person
Mess / dayroom	1 piece

M/TUG SERHAT BEY 1





As PGE Tugs, we commenced our maritime activities in 2020 alongside our tugboat services, and since then, we have rapidly progressed both internationally and domestically. We closely monitor the developments in the maritime sector in our country in recent years and strive to stay updated by taking necessary steps within our company, PGE Tugs.

We adopt a policy of providing the best service, with a focus on standout tugboat and towing services among the offerings provided to our clients. This principle guides our operations.

Since the inception of our journey, PGE Tugs has consistently demonstrated determination and professionalism, enabling us to accomplish significant projects and reach a competitive level in the maritime sector. We take pride in being among the esteemed companies worldwide and domestically, particularly with our offered tugboat services.

TUGBOAT SERVICES

PGE
TUGS