

M/TUG

# TİMUR BEY

SHIP PARTICULARS



# GENERAL INFORMATIONS

## M/TUG TİMUR BEY

### REGISTRATION

Year built / builder	2007/İSTANBUL
Flag	TURKEY
No of ship	1504196
Call sign	TCUP8
IMO	8655576

### DIMENSIONS

Length overall	25,10 m
Breadth moulded	7 m
Depth moulded	2.770 m
Gross tonnage	123,18
Net tonnage	70,64

### MACHINERY

Maker	BAUDOING
Type	12M26SR
Total BHP / kW	900 BHP
Bow thruster	N/A
Diesel generators	JOHN DERE 32 KW
Emergency generator	JOHN DERE 30 KW

### CAPASITIES %100

Diesel oil	22,660 m <sup>3</sup>
Fresh water	10 m <sup>3</sup>
Lube oil	2 m <sup>3</sup>
Fore peak	10 m <sup>3</sup>
Bilge tank	1 m <sup>3</sup>
Sewage tank	0,5 m <sup>3</sup>

### PERFORMANCE

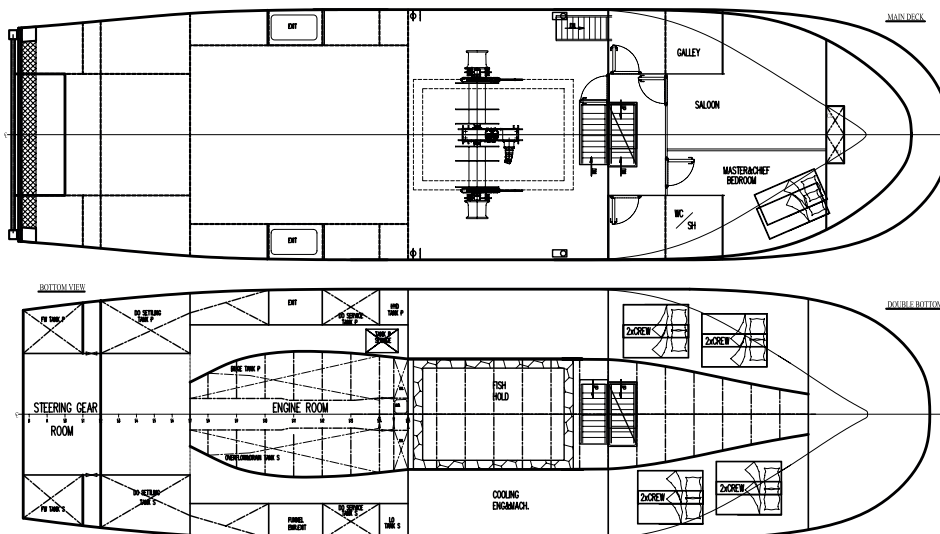
Bollard pull max and continuous	17 tons
Max speed	9 knots
Service speed	7 knots
Economical speed	6 knots

### TOWING / ANCHOR HANDLING

Spare tow wire	36 mm/250 m
Tow rope	120 mm/200 m
Anchor weight	2 x 200 kg
Anchor chain	2 x 165 m
Winch	2 T

### NAVIGATION AND COMMUNICATION

Radar	JRC RAD JMA5104
VHF	SAILOR RT 6022 (DSC)
SART	SAILOR SAR II
Navtex	SAMYUNG NAVTX SNX-300
GDMSS / VHF	JMC RTP 1000
GDMSS / VHF	JMC RTP 1000
GPS	SAMYUNG SPR 1400
EPIRB	ACL RLB-38 EPIRB
AIS	SAMYUNG S130 CLASS A



# GENERAL INFORMATIONS

M/TUG TIMUR BEY


## RESCUE EQUIPMENT

Life raft	2 pieces (10 personel)
Breathing tube	4 pieces
Breathing set backrest	4 pieces
Fixed system 45 kg CO <sub>2</sub>	1 piece
Fixed system 10 kg CO <sub>2</sub>	12 pieces
Fixed plot 0.150 kg CO <sub>2</sub>	1 piece
Chemical suit	2 pieces
Emergency escape breathing device	4 pieces
Passenger ladder	2 pieces
Fire blanket	1 piece
Fire hose	3 pieces
Fire hose nozzle	3 pieces
Fireman suit	4 pieces
Fireproof handheld radio for firefighters	1 pieces
Gas meter	1 pieces
Immersion suit	10 pieces
Life buoy 2.5 kg	10 pieces
Life buoy 4 kg	2 pieces
Man overboard buoy	2 pieces
Life jacket	10 pieces
Life jacket children	2 pieces
Medical oxygen 2 lt	2 pieces
Pilot ladder 4 mt	1 piece
DP fire extinguisher 2 kg	2 pieces
DP fire extinguisher 12 kg	1 piece
CO <sub>2</sub> fire extinguisher 5 kg	10 pieces
FOAM fire extinguisher 50 kg	1 piece
Fire pump (Volvo Penta)	N/A
Fire pump	2 pieces

## ACCOMMODATION

Cabins / beds	6 bed
Crew / passengers	10 person
Mess / dayroom	2 pieces





As PGE Tugs, we commenced our maritime activities in 2020 alongside our tugboat services, and since then, we have rapidly progressed both internationally and domestically. We closely monitor the developments in the maritime sector in our country in recent years and strive to stay updated by taking necessary steps within our company, PGE Tugs.

We adopt a policy of providing the best service, with a focus on standout tugboat and towing services among the offerings provided to our clients. This principle guides our operations.

Since the inception of our journey, PGE Tugs has consistently demonstrated determination and professionalism, enabling us to accomplish significant projects and reach a competitive level in the maritime sector. We take pride in being among the esteemed companies worldwide and domestically, particularly with our offered tugboat services.

**PGE**  
TUGS